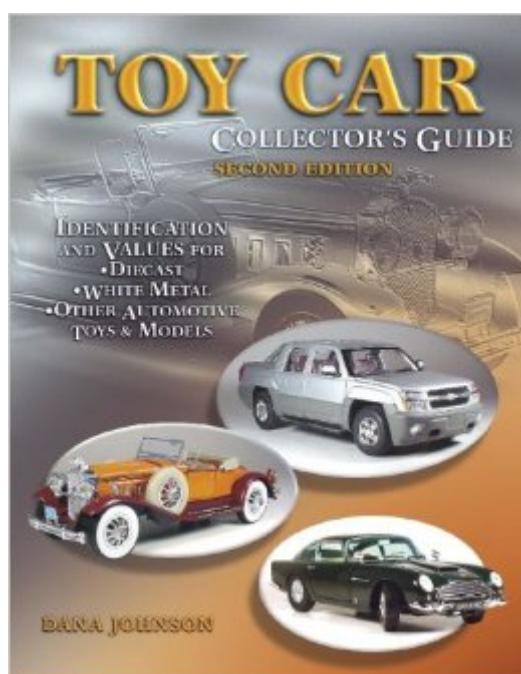


The book was found

Toy Car Collector's Guide: Identification And Values, Identification And Values For Diecast, White Metal, Other Automotive Toys & Models, Second Edition



Synopsis

Dana Johnson Dana Johnson, author of *Matchbox Toys, 1947 to 2003, Fourth Edition*, *The Other Matchbox Toys*, and *Diecast Toys & Scale Models*, has produced a revised edition of his popular *Toy Car Collector's Guide*. Newly updated and expanded, this second edition provides an alphabetical listing by brand of nearly 1,000 brands of cast iron, tinplate, diecast, slush mold, plastic, white metal, and other toy cars from around the world and through automotive history. An estimated 50,000 models are represented, including brief company profiles of every brand. Over 1,300 color photographs serve to greatly enhance the exhaustive text of this all-inclusive book, undoubtedly the most comprehensive on the market.

Book Information

Series: Toy Car Collectors Guide

Paperback: 464 pages

Publisher: Collector Books; 2nd edition (May 2005)

Language: English

ISBN-10: 1574324586

ISBN-13: 978-1574324587

Product Dimensions: 10.8 x 8.5 x 0.9 inches

Shipping Weight: 3.2 pounds

Average Customer Review: 3.8 out of 5 stars [See all reviews](#) (12 customer reviews)

Best Sellers Rank: #1,803,001 in Books (See Top 100 in Books) #15 in [Books > Crafts, Hobbies & Home > Antiques & Collectibles > Diecast](#) #386 in [Books > Crafts, Hobbies & Home > Antiques & Collectibles > Transportation](#) #459 in [Books > Crafts, Hobbies & Home > Antiques & Collectibles > Dolls, Toys & Figurines > Toys](#)

Customer Reviews

A great new, year 2002 softbound 336 page volume. There are more than 800 brands of cars included, from 1910 to 2000. An interesting history is provided, as well as current values and buying and selling tips. The book covers Hot Wheels, Matchbox, Corgi, Johnny Lightning, Tomica and more. There's detailed information about scale, evaluating models, and insights into buying and selling. Comprehensive guide for the collector.

This book has a review on almost every kind of toy car, but leaves out the prices of a lot of them. There is almost no selection for hot-wheels, but there is a lot of selection for matchbox. My problem

is that I have cars with no model numbers, which makes this book useless. I was able to find ERTL and a few others I had though.

I've just seen this book at a local bookstore. I was pretty excited when I found it and started to browse. But then, I became a little disappointed! The author gives a few pages to companies like Corgi and Dinky, and far too many to Majorette. I would say that the Majorette part is almost one tenth of the book! Overall the photos are pretty good and there's some good information too. I didn't buy it, but maybe I would later, and only if I find it at a very, VERY, low price!

Do not spend your money on this and all Dana books. Unless you want to see a bunch of letters and photos of listed cars that are not a collector items. Majorette items do half of the book. If you are lookin for a book on die cast models cars, buy something by an english.

This guide is a good starting point for finding the value of many types and brands of toy cars, but it falls flat on actual market value. I've found I've received higher returns than are listed in this book on most all of my sales.

It is not what I thought it would be I had so much problem returning the last on I keep it

[Download to continue reading...](#)

Toy Car Collector's Guide: Identification and Values, Identification and Values for Diecast, White Metal, Other Automotive Toys & Models, Second Edition Toy Car Collector's Guide: Identification and Values for Diecast, White Metal, Other Automotive Toys, & Models Diecast Toy Cars of the 1950s & 1960s: The Collector's Guide (General: Diecast Toy Cars) Collector's Guide to Diecast Toys & Scale Models: Identification and Values TAKARA TOMY Tomica Hyper Rescue HR04 Light Car (0/48) Diecast Toy Car The Collector's Encyclopedia of Metal Toys: A Pictorial Guide to Over 2,500 Examples of Tinplate and Diecast Toys Dating from 1850 to the Present Day British Diecast Model Toys Catalogue: Dinky Toys and Matchbox Toys v. 1 TAKARA TOMY Tomica Hyper Series Hyper Rescue HR14 Engineering Bike Diecast Toy Car Ferrari 458 GT, Yellow - Mattel Hot Wheels BCJ78 - 1/18 Scale Diecast Model Toy Car Collector's Guide to TV Memorabilia 1960s & 1970s: Identification and Values (Collector's Guide to TV Toys & Memorabilia) Vintage Metal Diecast Hubley Stake Truck #452 Kiddie Toy w/ Tail Gate That Lowers As Shown -- 6.5" Long Toy Making and Toy Games: How To Make Your Own Simple Wooden & Paper Toys and Easy to Play Games - Suitable for Toddlers, Kids and Adults! The Toy and Model Bus Handbook: Early Diecast Models

v.1 (Bus Handbooks) (Vol 1) Learn to Weld: Beginning MIG Welding and Metal Fabrication Basics - Includes techniques you can use for home and automotive repair, metal fabrication projects, sculpture, and more The Collector's Guide to Toy Cars: An International Survey of Tinsplate and Diecast Cars from 1990 The Collector's All-Colour Guide to Toy Cars: An International Survey of Tinsplate and Diecast Cars from 1900 to the Present Day Collector's All-colour Guide to Toy Cars: An International Survey of Tinsplate and Diecast Cars, from 1900 to the Present Day Collectors Guide to Diecast Toys and Scale Models British Diecast Model Toys Catalogue: Corgi Toys and Classics, Lledo, E.F.E.Budgie, Spot-on Plus Many Others v. 2 Matchbox Toys 1948 to 1993/Identification and Value Guide (Matchbox Toys: Identification & Value Guide)

[Dmca](#)